

## In Home Daycare

**Policy Date:** Monday, December 29, 2014

**Purpose:**

Provide a uniform method for meeting the requirements for in-home daycares, and to provide the public with information prior to paying for a permit.

**Scope:**

This policy is applicable only to homes within the unincorporated areas of Benton County.

**Procedure:**

Upon receiving a Benton County Planning Division Child Care application, a review of the application shall be made. Appropriate comments shall be made on the Benton County Fire Marshal Review of Proposed Planning Applications Form for Child Care.

A \$65.00 Special Inspection Permit Fee is charged. This fee encompasses both the Building Inspector and the Fire Marshal. After obtaining the permit from the Building Div. or the Planning Div, an inspection date will be scheduled.

**Requirements**

Child Care facilities with rooms that do not have a door directly to the outside, and in which children are resting, or sleeping must comply with the following:

1. A window must have a finished sill height of not more than 44” above the floor.
2. A window must have a minimum net clear openable area of 5.7 sq. ft. (820 sq.in.) (Figure 1 and Table 1.)
3. A window must have a net minimum clear openable width dimension of 20”.
4. A window with a finished sill height that is below the adjacent grade must comply with:
  - a. The window shall be capable of being fully opened and provide a minimum net clear opening of 9 sq.ft. with a minimum dimension of 36”.
  - b. Window wells deeper than 44” shall be equipped with approved permanently mounted ladder or stairs that are accessible. See Fig. 3

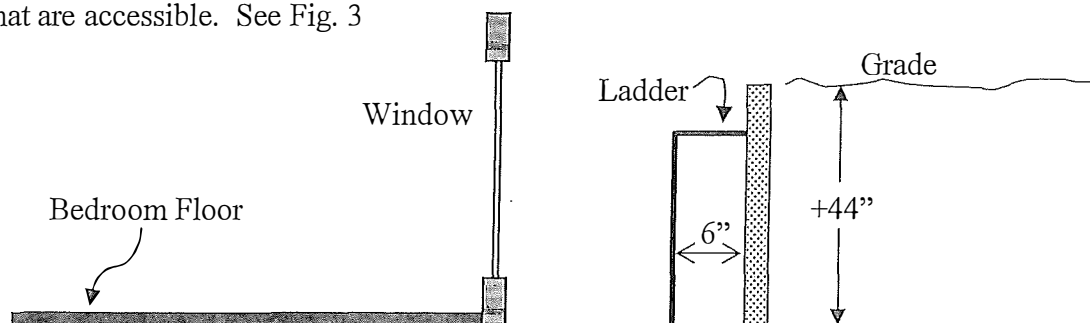


Fig. 3 Window well

- c. The ladder or stairs shall not encroach into the required dimensions of the window well by more than 6". See Fig. 3
- 5. **Family Child Day Care Homes that have 7-12 children must have two remote exit doors from each floor level that the children occupy**
- 6. Smoke detectors are required for each bedroom, and on each level of multiple floor dwellings.
  - a. Existing homes built prior to the adoption of the 1991 UBC may use battery operated smoke detectors.
  - b. New homes built since the adoption of the 1991 UBC must have electrically intertied smoke detectors that are equipped with a battery operated back up.
  - c. A detector is also required in hallways where the hallway ceiling is more than 24" below the Napping area ceiling. See Fig. 2

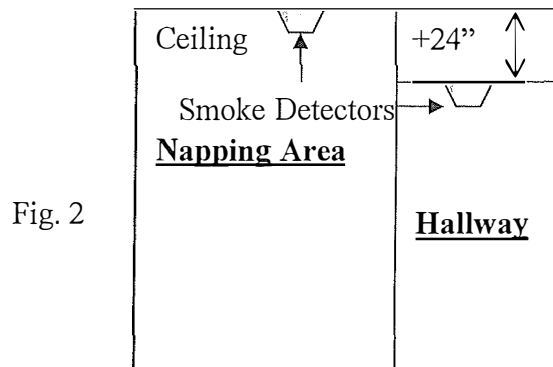


Fig. 2

- 7. At least one 2A10BC (5lb) fire extinguisher is required.

**Clear Minimum Width & Height in inches for windows to obtain the required 820 sq. in of openable area.**

**Table 1.**

Width	20	20.5	21	21.5	22	22.5	23	23.5	24
Height	41	40	39.1	38.2	37.3	36.5	35.7	34.9	34.2
Width	25	25.5	26	26.5	27	27.5	28	28.5	29
Height	32.8	32.2	31.6	31	30.4	29.8	29.3	28.8	28.3
Width	29.5	30	30.5	31	31.5	32	32.5	33	33.5
Height	27.8	27.4	26.9	26.5	26.1	25.7	25.3	24.9	24.5
Width	34	34.2							
Height	24.1	24							

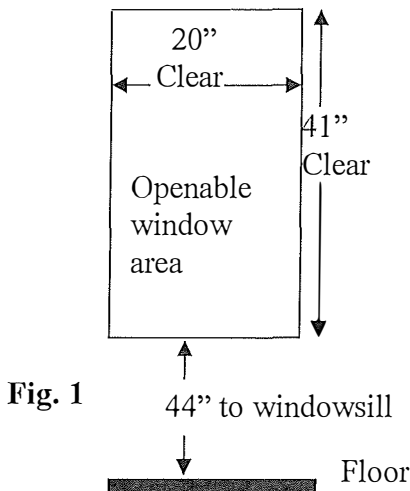


Fig. 1